

b4Calcium Channel. Rabbit Polyclonal Antibody , Human

BACKGROUND

Heterologous expression studies have shown that the activity of voltage-gated Ca²⁺ channels is regulated by their beta subunits in a beta subunit isoform-specific manner. Our data show that all four beta subunit isoforms associate with L-type Ca²⁺ channels in mammalian brain. This beta subunit heterogeneity may play an important role for the fine tuning of L-type channel function and modulation in neurons.

ORDERING INFORMATION

CATALOG NUMBER
X1516P

SIZE
100 µg

FORM
Unconjugated

HOST/CLONE
Rabbit

FORMULATION
Provided as solution in phosphate buffered saline with 0.08% sodium azide

CONCENTRATION
1 mg/ml

ISOTYPE
IgG

APPLICATIONS
Western Blot

IMMUNOGEN

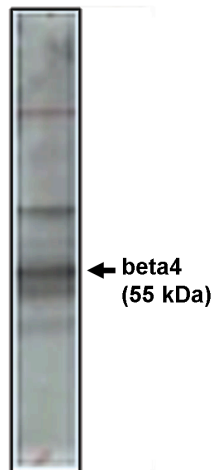
Synthetic peptide derived from the rat calcium channel beta4 subunit conjugated to KLH

SPECIES REACTIVITY

Human

Legend:

Western blot analysis using beta4 antibody on rat brain lysate



For research use only. Not for use in human diagnostics or therapeutics.

POSITIVE CONTROL/TISSUE EXPRESSION

Rat brain lysate

COMMENTS

This antibody can be used for Western blotting (5-10 $\mu\text{g/ml}$). Optimal concentration should be evaluated by serial dilutions.

SHIP CONDITIONS

Ship at ambient temperature, freeze upon arrival

STORAGE CUSTOMER

Product should be stored at -20°C . Aliquot to avoid freeze/thaw cycles

STABILITY

Products are stable for one year from purchase when stored properly

REFERENCES

1. Castellano, A et al "Cloning and expression of a neuronal calcium channel beta subunit" J. Biol. Chem. 1993, 268 (17), 12359-12366

LAST MODIFIED 8/30/2007

For research use only. Not for use in human diagnostics or therapeutics.